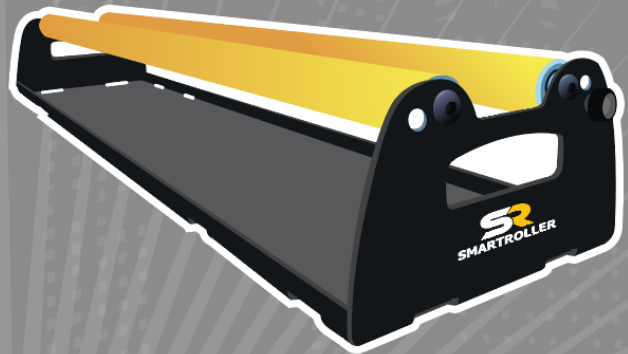




First steps with your new SmartRoller

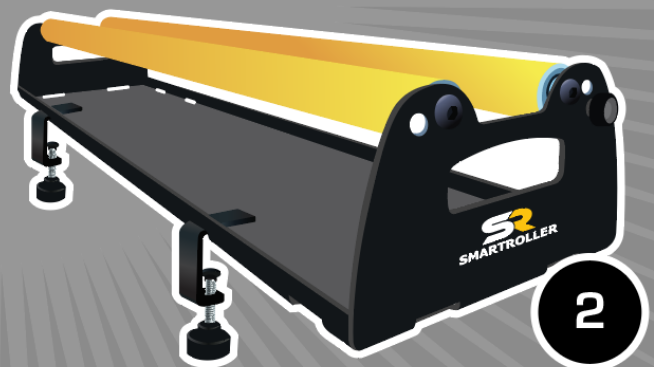
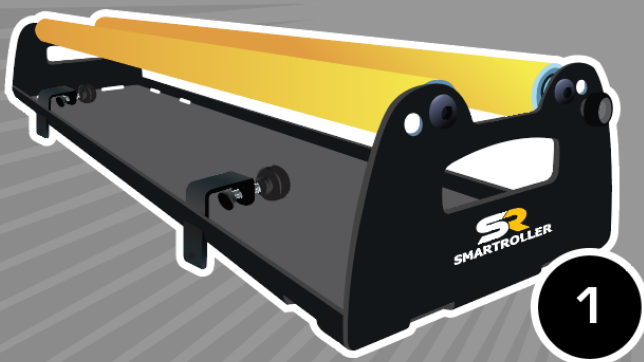
After unboxing you have:

The SmartRoller. Mounting kit for normal tables and the attachable tool holder which goes on the side. It is also possible to buy a flatbed attachment kit.



You can attach it to your table in 2 ways:

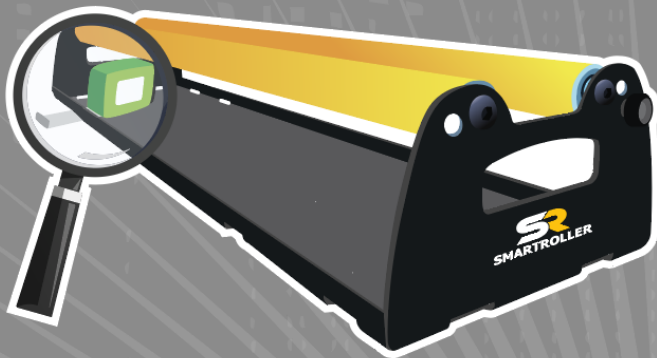
1. You can use the mounting kit to lock the SR against the table.
2. You can use the mounting kit to fasten the SR to the table.



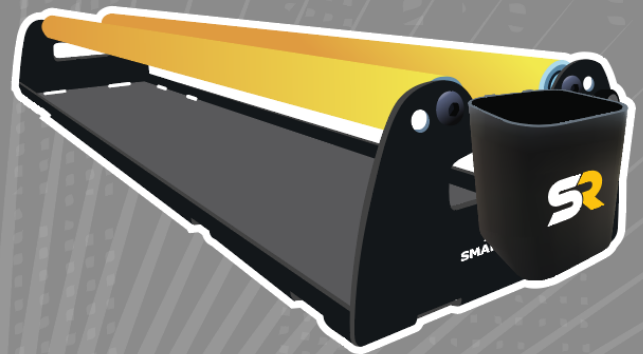


First steps with your new SmartRoller

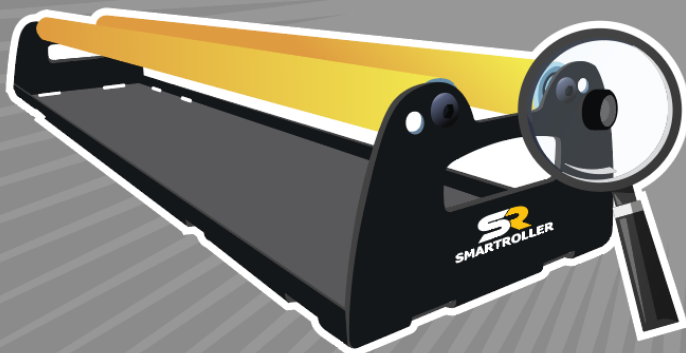
If you have a measuring tape you can attach it here:



Toolholder can be installed on both sides:



You can brake the second roll with this screw:



Now you're ready to use application tape or vinyl:

